

# AKAI SERVICE MANUAL

SXM007

EXTERNAL SRAM BOARD

MODEL **SXM007** S/X

SXM007-S : For model S700

SXM007-X : For model X7000

SXM007s/x

1  
2  
3  
4  
5  
6  
7  
8

A B C D E F G H I J K

IC 1 to 19 M88A2256-12LL

NOTE  
UNLESS OTHERWISE SPECIFIED  
ALL RESISTORS IN OHMS 1/8W(1%)  
ALL CAPACITORS IN  $\mu$ F 25 V(1%)

SXM007s/x  
SCHEMATIC  
No. 880201A

SXM007S/X  
SCHEMATIC DIAGRAM  
NO. 880201A

B (POWER SUPPLY) LINE

# PARTS LIST

## 2. P.C.BOARD

| Ref. No. | Part No.   | Description           |
|----------|------------|-----------------------|
| BT       | EC-381294J | BATTERY LITHIUM       |
| D1       | ED-376335  | D SCHOTTKY SB02-03S-T |
| D2       | ED-376335  | D SCHOTTKY SB02-03S-T |
| D3       | ED-301911  | D SILICON H DS448     |
| IB1      | EH-353790  | COMP R RKC1/8B4 223J  |
| IB2      | EH-353790  | COMP R RKC1/8B4 223J  |
| IB3      | EH-347743  | COMP R RKC1/8B4 103J  |
| IB4      | EH-347743  | COMP R RKC1/8B4 103J  |
| IB5      | EH-347743  | COMP R RKC1/8B4 103J  |
| IB6      | EH-378917J | COMP R RML-S4-J104    |
| IB7      | EH-378917J | COMP R RML-S4-J104    |
| IB8      | EH-378918J | COMP R RML-S8-J104    |
| IC1      | EI-381286J | IC MB84256-12LL       |
| IC2      | EI-381286J | IC MB84256-12LL       |
| IC3      | EI-381286J | IC MB84256-12LL       |
| IC4      | EI-381286J | IC MB84256-12LL       |
| IC5      | EI-381286J | IC MB84256-12LL       |
| IC6      | EI-381286J | IC MB84256-12LL       |
| IC7      | EI-381286J | IC MB84256-12LL       |
| IC8      | EI-381286J | IC MB84256-12LL       |
| IC9      | EI-381286J | IC MB84256-12LL       |
| IC10     | EI-381286J | IC MB84256-12LL       |
| IC11     | EI-381286J | IC MB84256-12LL       |
| IC12     | EI-381286J | IC MB84256-12LL       |
| IC13     | EI-381286J | IC MB84256-12LL       |
| IC14     | EI-381286J | IC MB84256-12LL       |
| IC15     | EI-381286J | IC MB84256-12LL       |
| IC16     | EI-381291J | IC TC74HC138F         |
| IC17     | EI-381291J | IC TC74HC138F         |
| IC18     | EI-381291J | IC TC74HC138F         |
| IC19     | EI-381292J | IC TC74HC133F         |
| IC20     | EI-381293J | IC TC74HC08F          |
| IC21     | EI-381290J | IC TC74HC245F         |
| IC22     | EI-381288J | IC TC74HC373F         |
| IC23     | EI-381287J | IC TC74HC374F         |
| IC24     | EI-381289J | IC TC74HC257F         |
| IC25     | EI-376373  | IC TC74HC32F          |
| IC26     | EI-377044  | IC TC74HC14F          |
| IC27     | EI-376373  | IC TC74HC32F          |
| IC28     | EI-376373  | IC TC74HC32F          |
| IC29     | EI-378806J | IC TC74HC125F         |
| IC30     | EI-364253  | IC PST520D-2          |
| J1       | EJ-367389  | SOCKET IL-W-36S-SD    |

## 3. FINAL

| Ref. No. | Part No.   | Description                        |
|----------|------------|------------------------------------|
| 1        | MH-371594  | SPACER SUPPORT 3675                |
| 2A       | EI-381296J | IC TMM27128AD-20X7000-V2.0 (X7000) |
| 2B       | EI-381297J | IC TMM27128AD-20-S700-V2.0 (S700)  |

SXM007

## PARTS LIST

AKAI ELECTRIC CO., LTD.

12-14, 2-Chome, Higashi-Kojiya, Ohta-ku, Tokyo, Japan Printed Date May 6, 1988 Printed in Japan  
SERVICE DEPARTMENT TEL Tokyo (745)9884 TELEX: J26261 Printed No. 880329-G1-600

MODEL: S700

INDEX

| Bulletin No. | Subject No. | Page No. | Description                           |
|--------------|-------------|----------|---------------------------------------|
| MS-0013      | 001         | 1        | ROM Version change V1.2               |
| MS-0015      | 002         | 2        | ROM IC change V1.4                    |
|              | 003         | 3        | Sample noise countermeasure           |
| MS-0016      | 004         | 4        | ROM IC change V1.5                    |
| MS-0020      | 005         | 5        | SXM007-S Sample noise countermeasure  |
|              | 006         | 5        | SXM007-S Audio Trigger countermeasure |

001 Subject: Trouble countermeasure and improvement of operation

Symptom : "Bad data on disk" appears when LOAD or VERIFY are executed or the motor in QD unit stays rotating when LOAD, SAVE or VERIFY are executed, especially when cold.

Cause : Variables in QD mechanism, e.g. flexibility of Head wire, pressure of tension spring and etc.

Remedy : Replace with a new ROM IC Version V1.2 which searches a head of data repeatedly.

|       | Ref. No. | Part No.    | Description                |
|-------|----------|-------------|----------------------------|
| (NEW) | 6-IC8    | EI-367554-C | IC TMM27128AD-20-S700 V1.2 |

With this ROM, an operational change has been made to ease the setting of programs.

Previously, the sine-wave test tone was programmed into P1 to P6 (P16 with ASK70). In order to clear these programs, either sampling the new sound into S1 to S6 (S16 with ASK70) or re-setting high key range (H=0) of P1 to P6 (P16 with ASK70) have to be executed.

Now, the test tone is programmed only in P1/S1. Refer to page 23 of Operator's Manual.

### Key split function

Now try using the key split function to assign various sampled sounds to a single program number.

Using the S700, it is possible to split various sampled sounds onto different areas of the keyboard for a maximum of 6 sounds (16 using the ASK70).

When the S700 is initialized when the power is turned on, the following sine wave test tone is programmed:

P1 :S1:-:-:-:-:-

The key range for this test tone is L=24, H=99.

The test tone is cleared when a sampled sound is set for sample number 1, but the test tone can be stopped when the key range setting shown below is set:

P1 :S1:L=24:H=0

(Set high key range to 0.)

Changed from : February 1987  
Service Ref. No. : CNL0284A

Now continue on page 24 to see how to set the KEY SPLIT function.



002 Subject: Trouble countermeasure

Symptom : 1) Malfunction in MIDI System Exclusive operation.  
Failure in sending out the complete bytes. (V1.3)  
2) Malfunction in Rec. trigger function.  
In foot switch operation, Recording started when audio input  
signal exceeds the threshold level even though the foot switch  
is not activated. (V1.4)

Remedy : Replace ROM IC of version V1.4 in CPU P.C. Board.

|       | Ref. No. | Part No.    | Description                |
|-------|----------|-------------|----------------------------|
| (NEW) | 6-IC8z   | EI-367554-E | IC TMM27128AD-20 S700 V1.4 |

Note : In order to set the unit in Foot Switch Trigger mode, turn the control knob to shift the trigger level to the left side of LCD display once and then turn the control knob again to set the trigger level back to its far right position. When the trigger level is set in a lower position, recording starts as input signal exceeds the trigger level disregarding the foot switch.

Changed from : May 1987

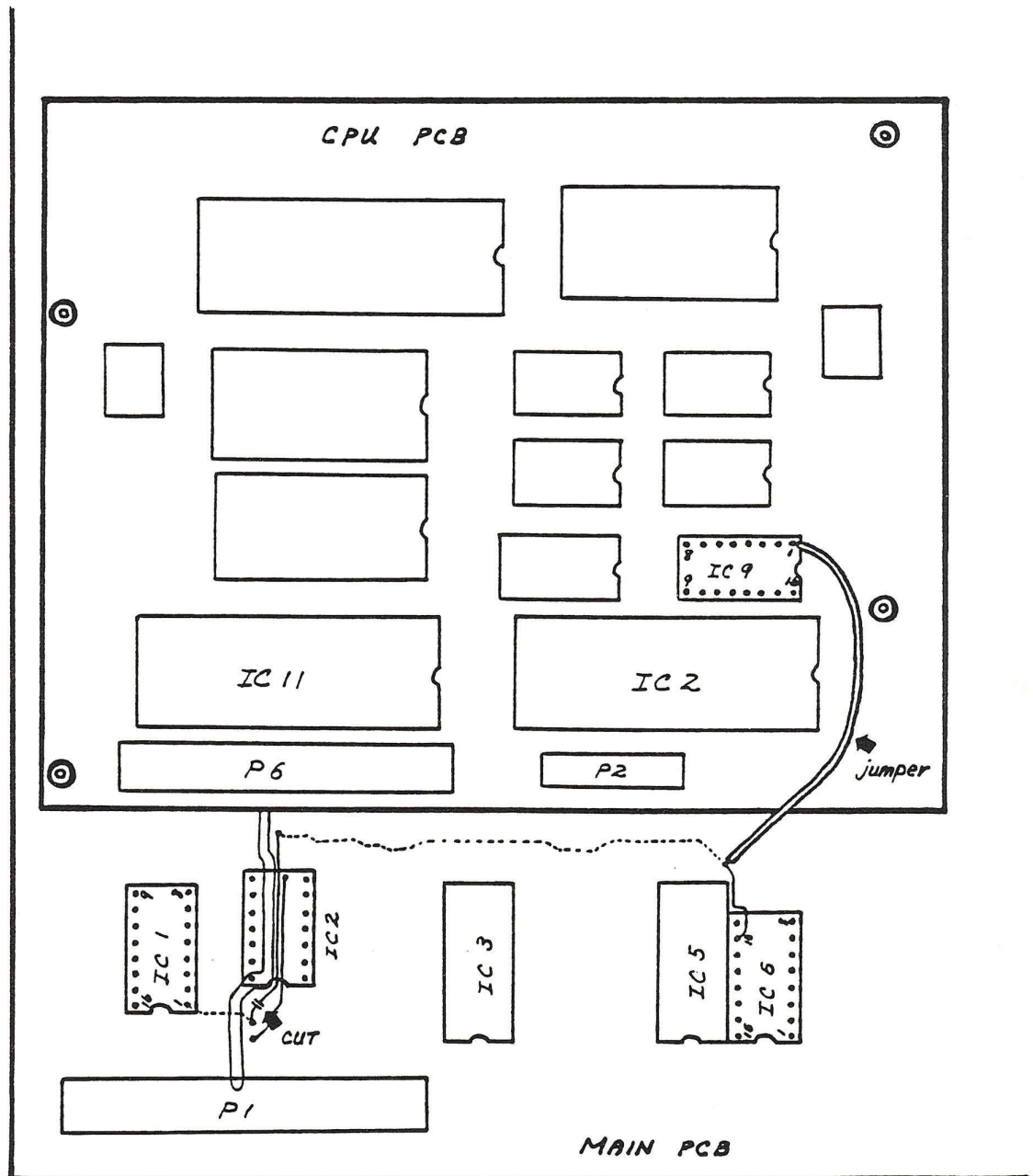
Interchangeability : Only NEW to FORMER and NEW.

Service Ref. No. : CNL 0383 CNL 0402

003 Subject: Trouble countermeasure

Symptom : Sample sound may become noisy after hours of use.

Remedy : Change Pin10 connection of IC6 in Main P.C. Board to get Clock signal from Pin1 of IC9 in CPU P.C. Board. Cut a P.C.B. pattern and add a jumper wire as shown.



Note : The Main P.C. Board with this modification is not interchangeable and will not work correctly when installed to an old unit without a jumper wire to CPU P.C. Board.

MODEL: S700

No. MS-0016

DATE: September 1987

004 Subject: Trouble countermeasure

Symptom: 1) All memorized sound program is cleared and the initial sine-wave tone or no sound is played while playing.  
2) The notes may continue to sound even after keys are released and may not accept any operation afterwards except turning the unit off.

Remedy: Replace ROM IC with Version V1.5 ROM.

|       | Ref. No. | Part No.    | Description                |
|-------|----------|-------------|----------------------------|
| (NEW) | 6-IC8z   | EI-367554J6 | IC TMM27128AD-20 S700 V1.5 |

Changed from : Sept. 1987

Interchangeability : Only NEW part to FORMER and NEW units

Service Ref. No. : CNL 0550



005 Subject: Trouble countermeasure

Symptom: 1) Noise may be produced when Sample memorized is played with SXM007-S installed.  
2) "Verify Error" may appear when verified after S700 is turned off and turned on again with SXM007-S installed.

Cause : Momentary drop in Power Supply voltage of SRAM board when S700 is turned off.

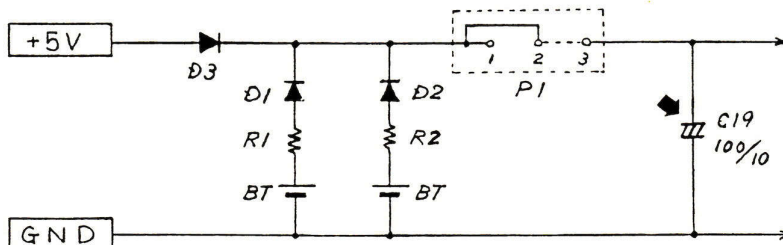
Remedy : Install additional C19 tantalum capacitor(100uF/10V) in Power Supply Line.

|       | Ref. No. | Part No.   | Description            |
|-------|----------|------------|------------------------|
| (NEW) | 2-C19z   | EC-385802J | C TT V S99 101M 10.0DC |

Changed from :April 1988

Interchangeability : NEW parts to NEW and FORMER units.

Service Ref. No. : K-003-88



006 Subject: Trouble countermeasure

Symptom: No AUDIO TRIGGER function when SXM007-S is installed.

Cause : Bug in software program.

Remedy : Change CPU ROM IC S700 V2.0 (previously labeled as SX7S V1.0) to new ROM V2.1 in CPU PCB.

|       | Ref. No. | Part No.    | Description                |
|-------|----------|-------------|----------------------------|
| (NEW) | 3-2Bz    | EI-381297J1 | IC TMM27128AD-20 S700 V2.1 |

Changed from :April 1988

Interchangeability : NEW parts to NEW and FORMER units.

Service Ref. No. : K-004-88

## 005 Subject: Trouble countermeasure

Symptom: 1) Noise may be produced when Sample memorized is played with SXM007-X installed.  
 2) "Verify Error" may appear when verified after X7000 is turned off and turned on again with SXM007-X installed.

Cause : Momentary drop in Power Supply voltage of SRAM board when X7000 is turned off.

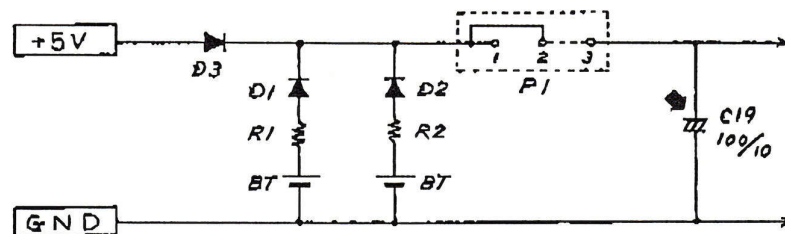
Remedy : Install additional C19 tantalum capacitor(100uF/10V) in Power Supply Line.

|       | Ref. No. | Part No.   | Description            |
|-------|----------|------------|------------------------|
| (NEW) | 2-C19z   | EC-385802J | C TT V S99 101M 10.0DC |

Changed from :April 1988

Interchangeability : NEW parts to NEW and FORMER units.

Service Ref. No. : K-003-88



## 006 Subject: Trouble countermeasure

Symptom: No AUDIO TRIGGER function when SXM007-X is installed.

Cause : Bug in software program.

Remedy : Change CPU ROM IC X7000 V2.0 (previously labeled as SX7X V1.0) to new ROM V2.1 in CPU PCB.

|       | Ref. No. | Part No.    | Description                 |
|-------|----------|-------------|-----------------------------|
| (NEW) | 3-2Az    | EI-381296J1 | IC TMM27128AD-20 X7000 V2.1 |

Changed from :April 1988

Interchangeability : NEW parts to NEW and FORMER units.

Service Ref. No. : K-004-88