

# LIST OF PATCH DIAGRAMS

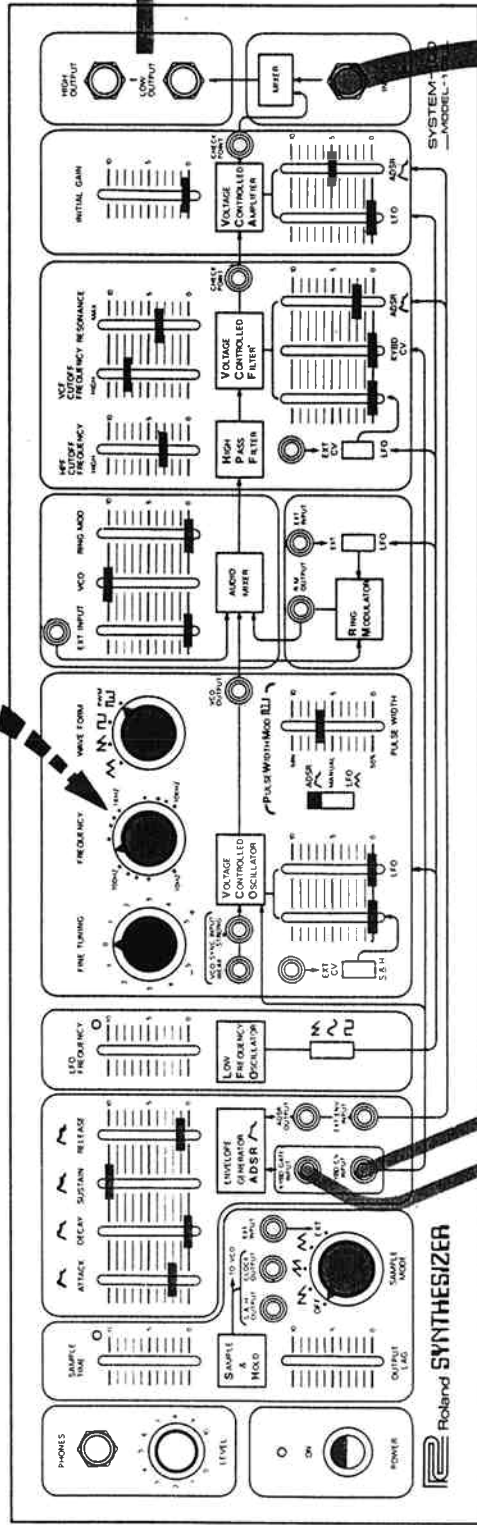
ADSR Test .....	25	S/H Test .....	26	Flute + Violin .....	9
AM Test .....	24	Snare Drum .....	14	Vowel Sounds	
Accordion .....	1	Standing Ovation .....	15	see : Basic Vowel Patch .....	3
Applause .....	2	Steam Locomotive .....	16	Wind .....	22
Basic Vowel Patch .....	3	String Orchestra .....	17	"You" .....	23
Birds .....	4	Sync Test, Strong .....	27	Video Patch .....	30
Bubbles .....	5	Sync Test, Weak .....	28		
Celesta .....	6	Sync Tone Color Experiments .....	29		
Clarinet .....	7	Test Patches .....	24-29		
Delayed Vibrato .....	8	Thunder .....	18		
Flute + Violin .....	9	Timpani .....	19		
French Horn .....	11	Tone Color Experiments, Sync .....	29		
Cong .....	10	Tornado .....	20		
Horn .....	11	VCO Strong Sync Test .....	27		
Locomotive, Steam .....	16	VCO Weak Sync Test .....	28		
Oboe .....	12	Vibraphone .....	21		
Ring Modulator .....	13	Vibrato, Delayed .....	8		

## TEST PATCHES

AM Test .....	24
ADSR Test .....	25
S/H Test .....	26
Sync Test, Strong .....	27
Sync Test, Weak .....	28
Sync Tone Color Experiments .....	29

Tune to one octave below VCO-1

(VCO-1 の1オクターブ下: 220Hzにセット)

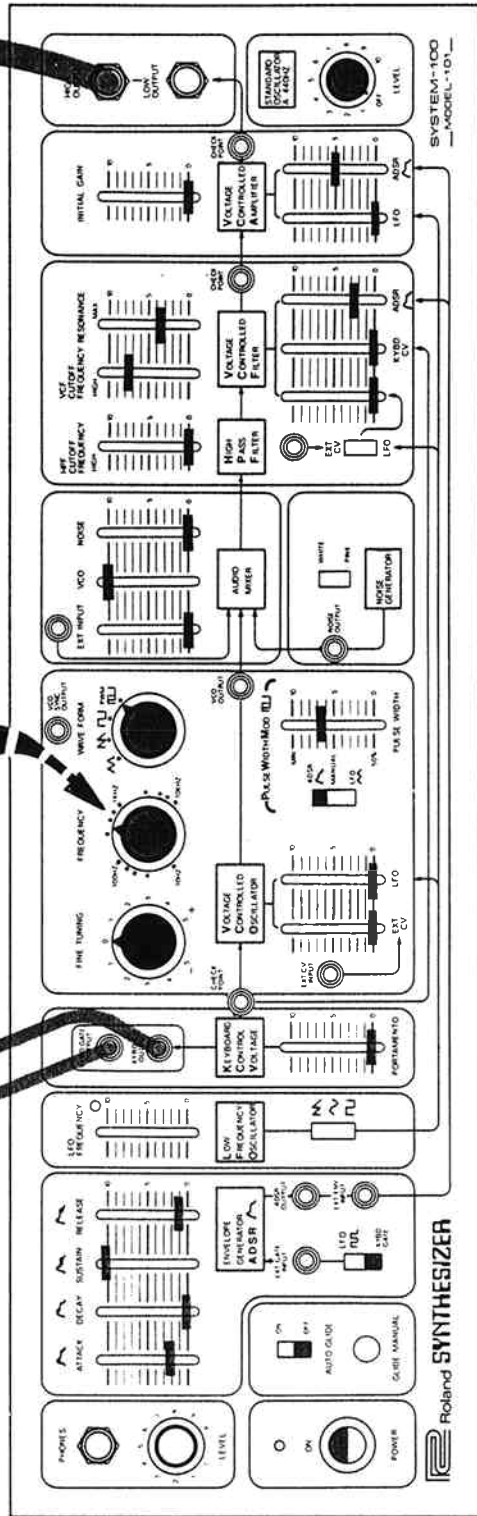


**102**

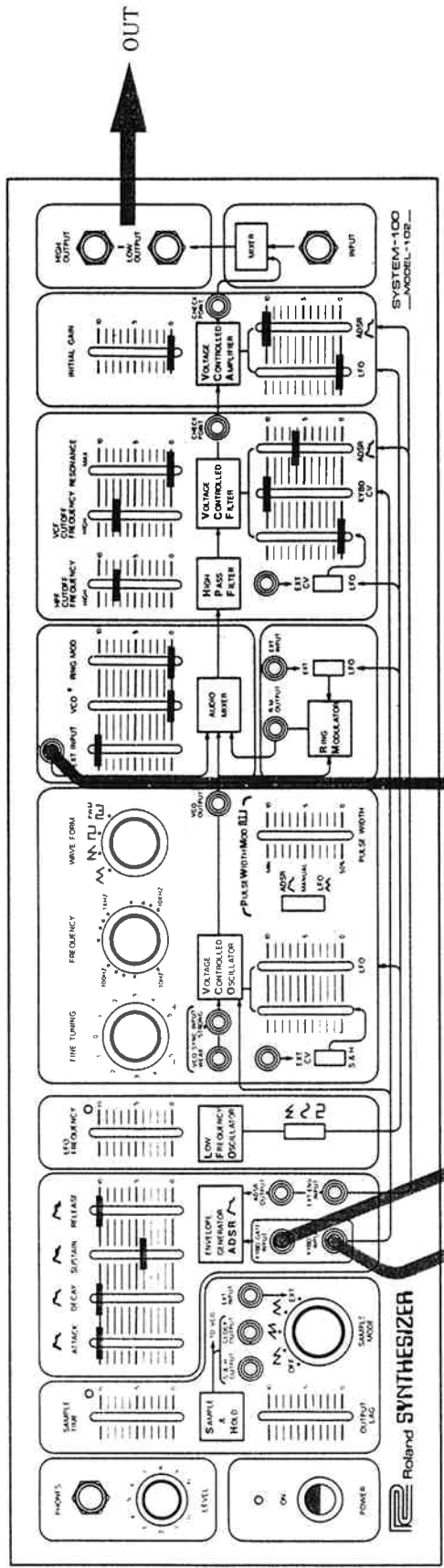


Set at 440Hz.

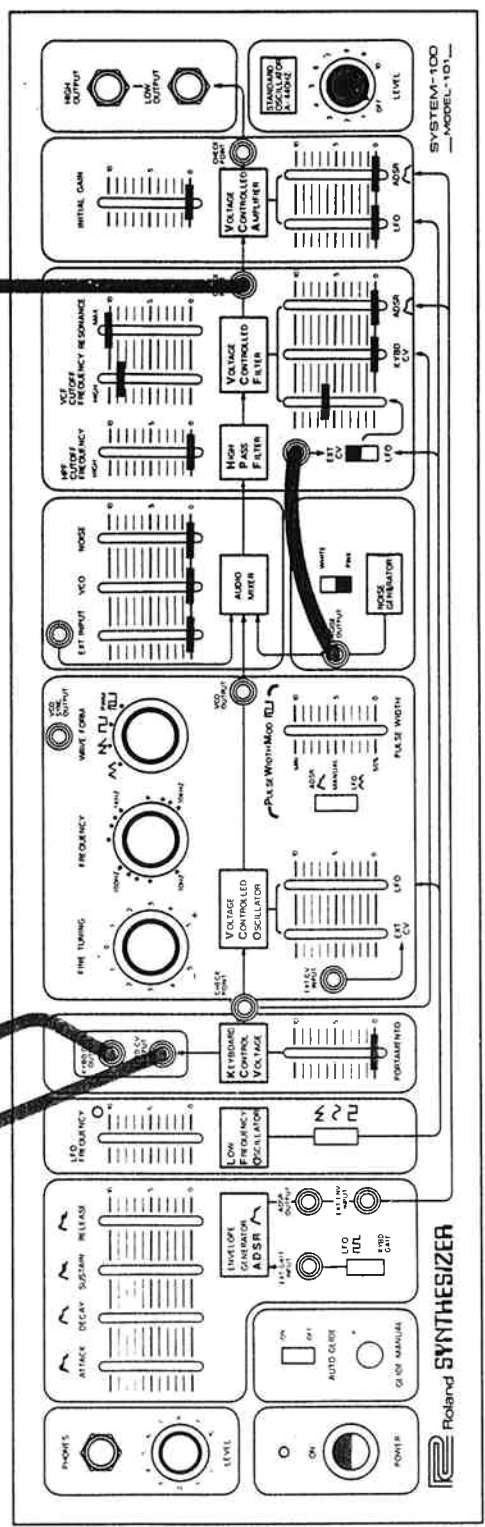
(440Hzにセット)



**101**

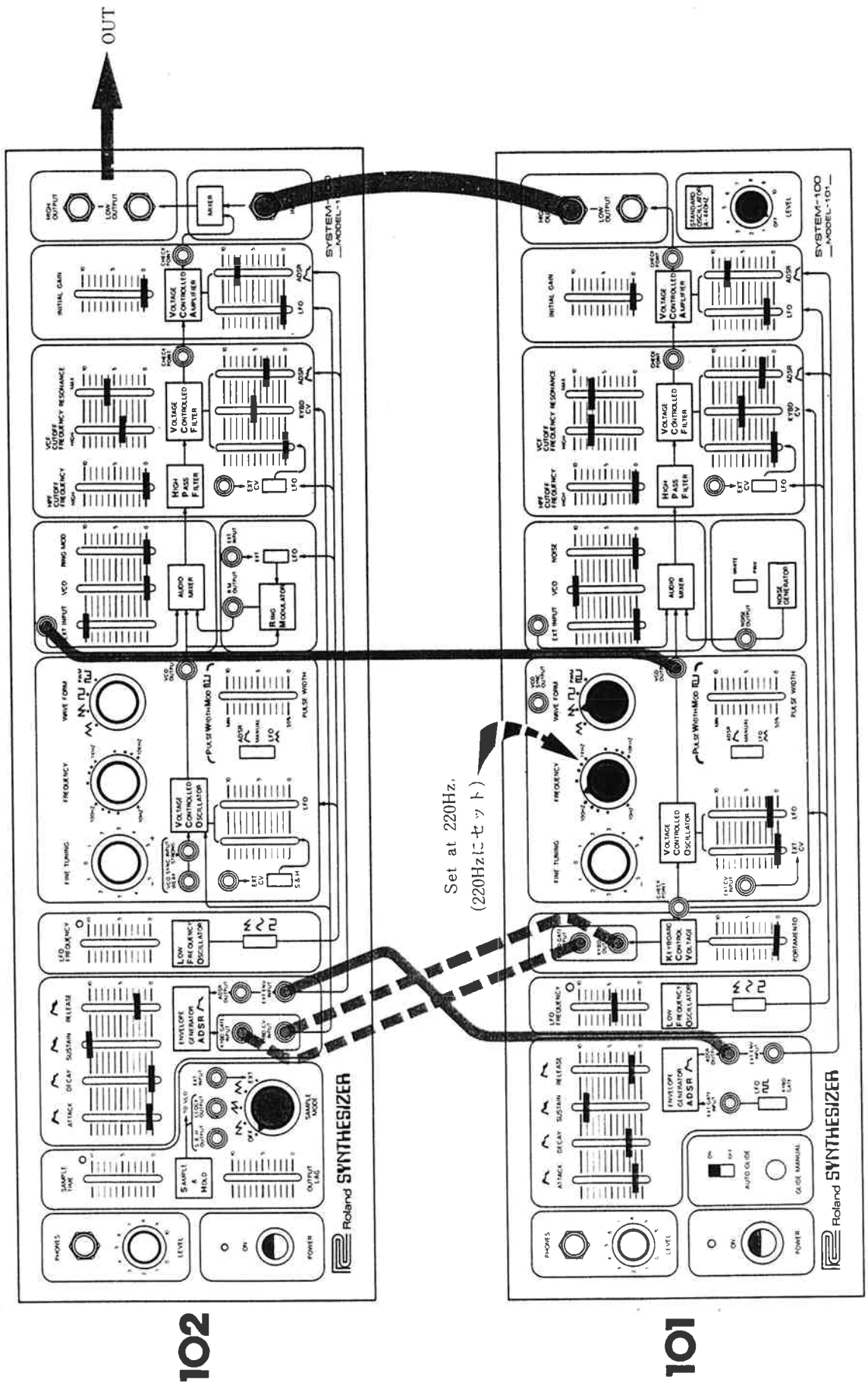


102



101

Press a key on the keyboard to produce applause.  
 (キーを押すと拍手音が出ます。)

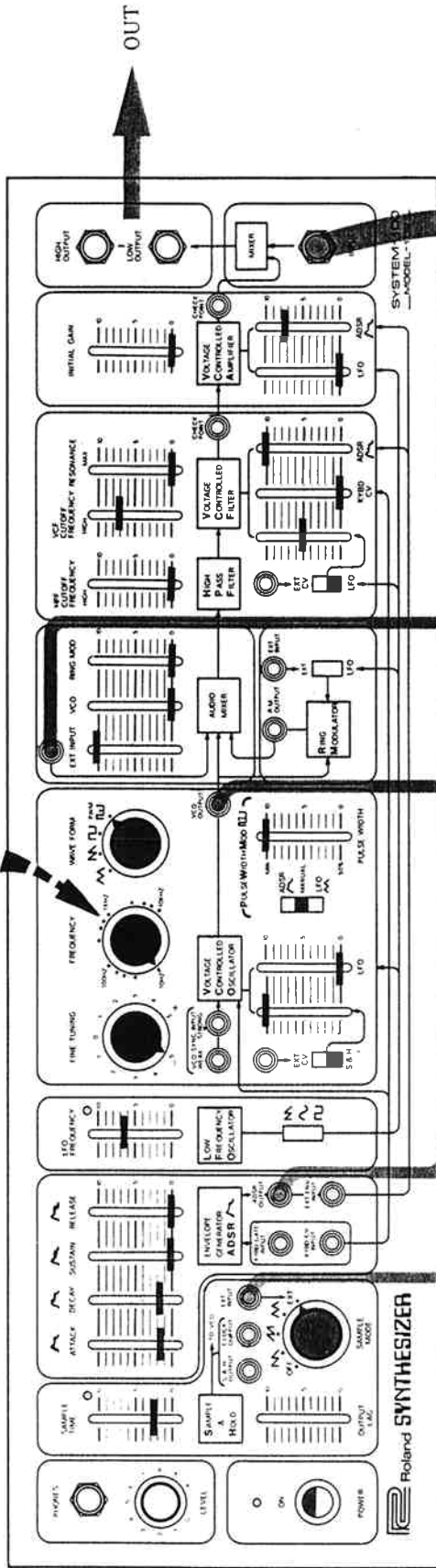


102

101

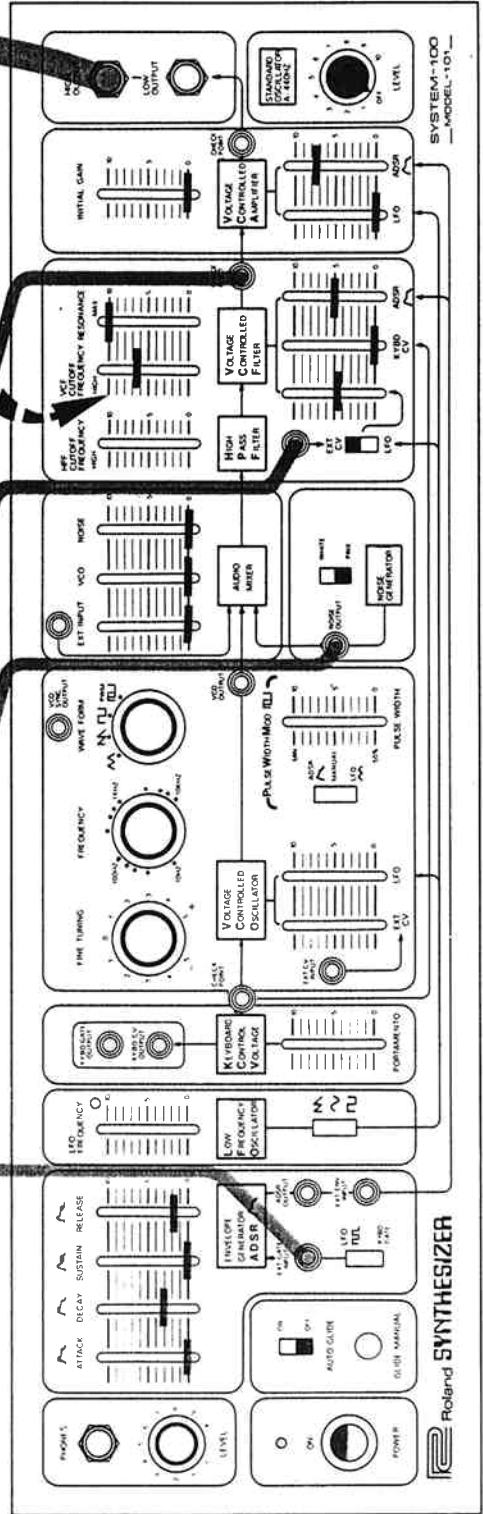
This patch will require a lot of experimenting, especially with the VCF settings.  
(フィルター部のセッティングによって、さまざまなバリエーションをつくり出すことができます。)

Set near lowest point  
(10Hz ぐらいの低い周波数にセット)



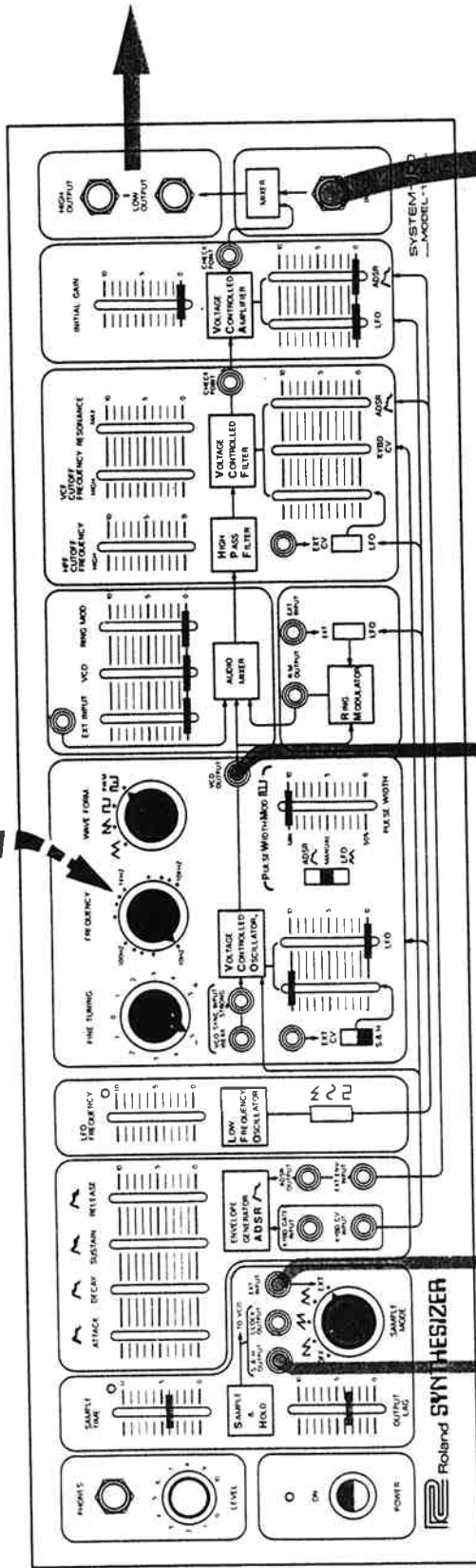
102

Decides average pitch  
(適切な高さにセットします。)

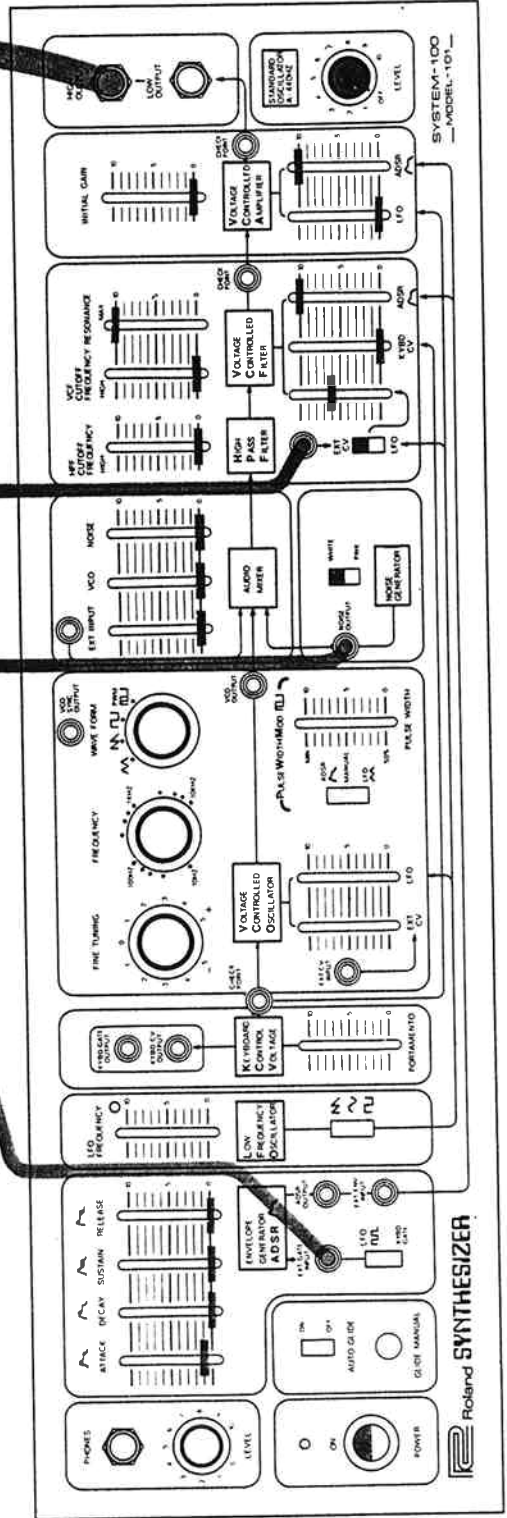


101

Set near lowest point  
 (10Hzぐらいの低い周波数にセット)



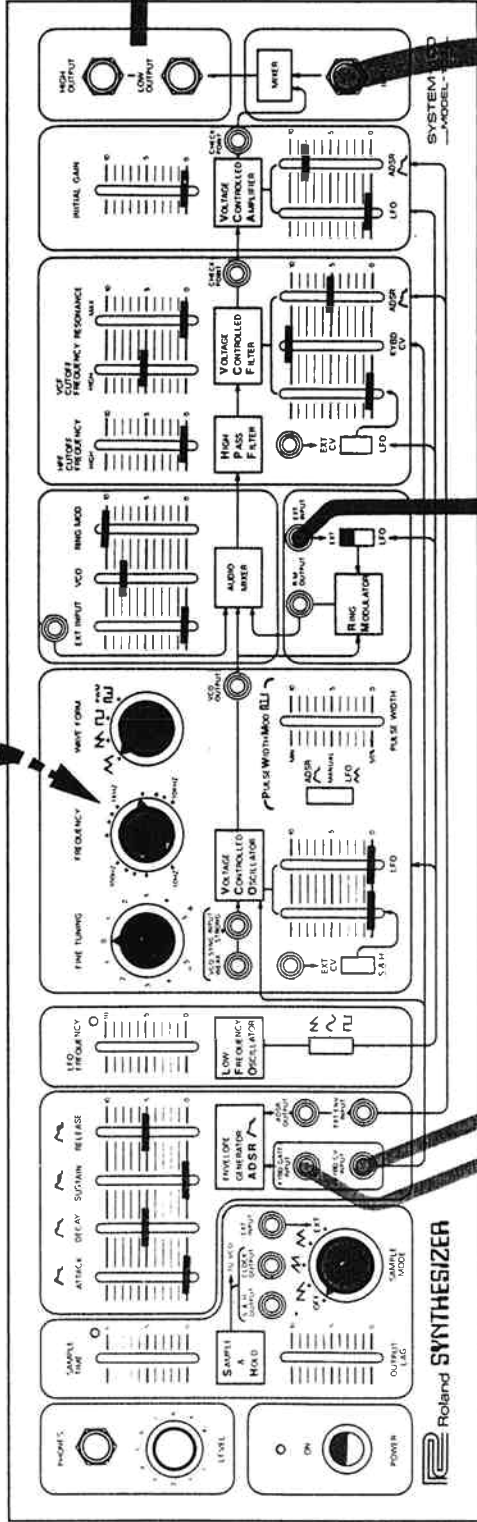
102



101



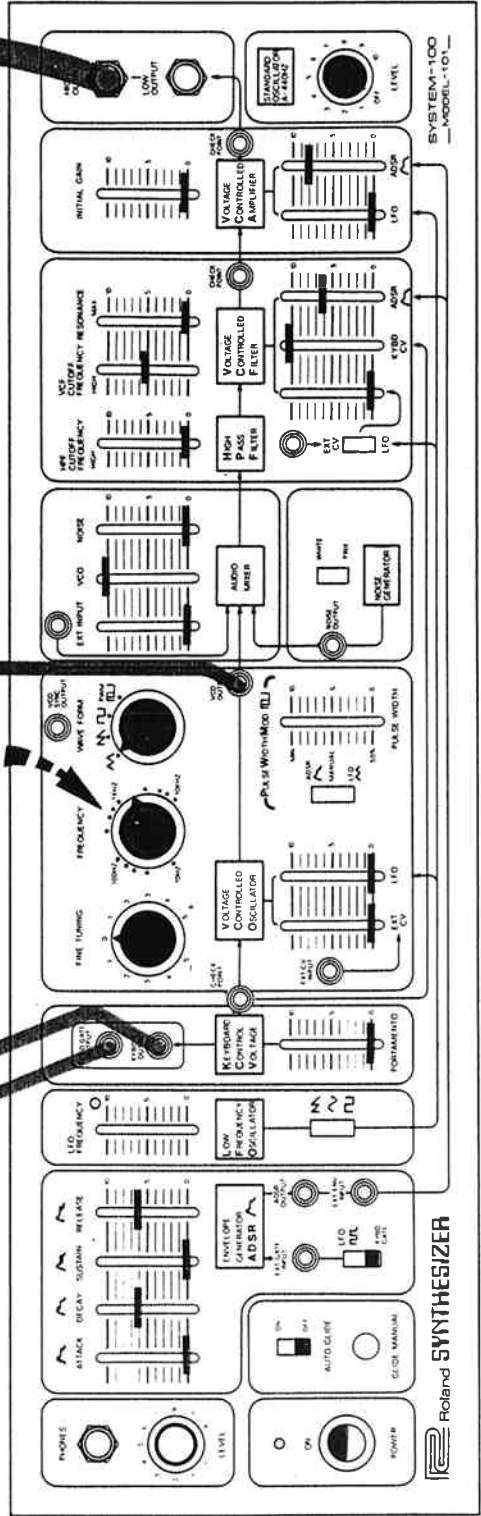
Tune to a major third above VCO-1  
(VCO-1の長3度にセット)



102



Set at 1760Hz  
(1760Hzにセット)



101